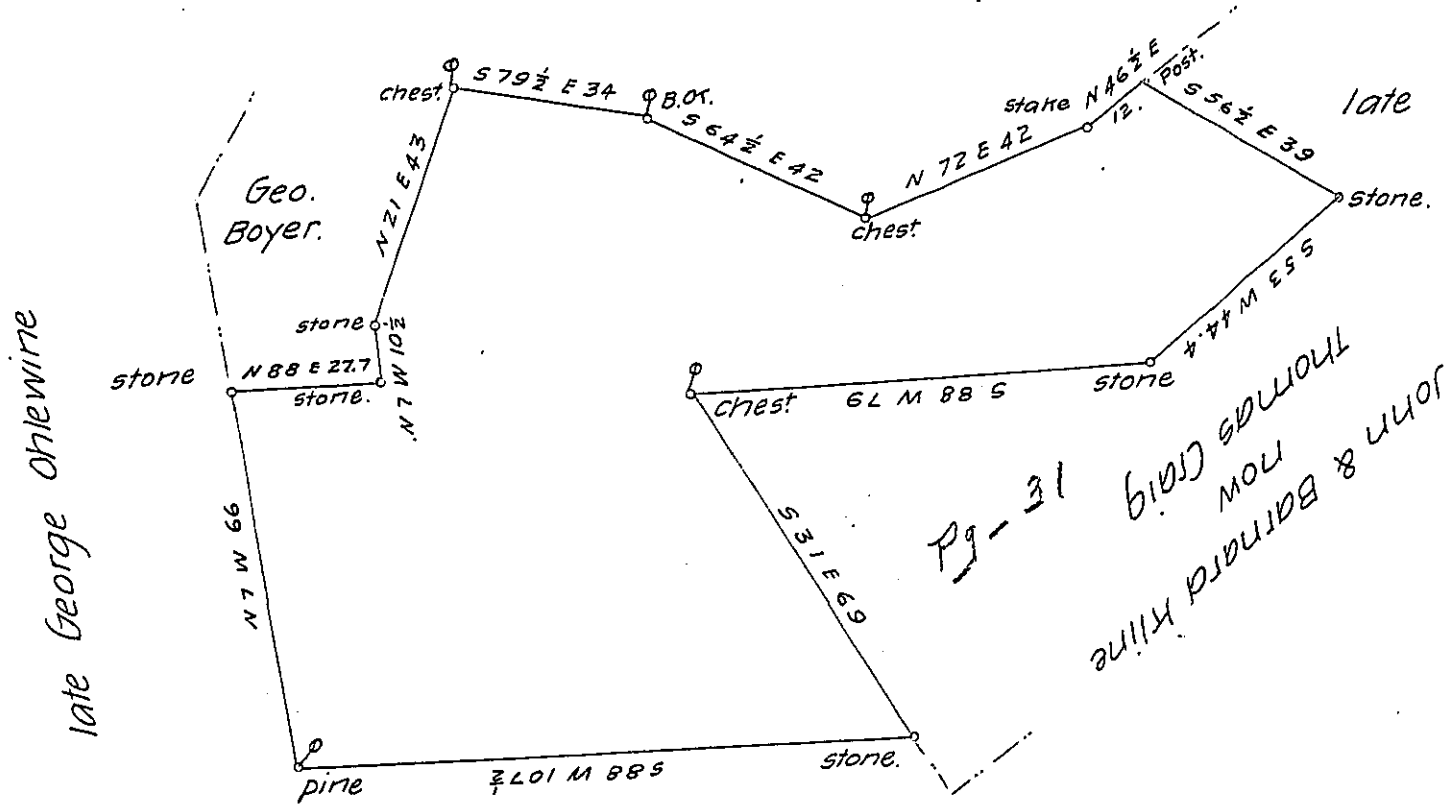


Heirs of John Kline



late Peter Strohl.
 now
 Christopher Kern.

By Virtue of a warrant granted to John Kline the 12th Day of January 1793, for 100 acs. Surveyed the 3d day of August 1837, unto Thomas Craig, the above described tract of land, situate in Towamensing township in the County of Northampton, Containing Seventy acres, one hundred and thirteen perches and the allowance of six per cent &c. (being a part of the land originally surveyed by virtue of the above recited warrant and this part now owned by Thomas Craig

Per Francis Weiss —

To John Taylor Esquire
 Surveyor General

I believe the above Survey to be correct.
 A. W. Lerch D.S.

no. col.

IN TESTIMONY that the above is a copy of the original remaining on file in the Department of Internal Affairs of Pennsylvania, made conformably to an Act of Assembly approved the 16th day of February, 1833, I have hereunto set my Hand and caused the Seal of said Department to be affixed at Harrisburg, this twelfth day of JULY 1905.

Loach R. Brown
 Secretary of Internal Affairs.